



PINE CLIFFS RESORT
ALGARVE

THE
LUXURY
COLLECTION

Pine Cliffs, a Luxury Collection Resort Algarve, Portugal





Unique Location

The Pine Cliffs Resort is perched high up on the southern coast of Portugal, immediately above wave-battered red sandstone and golden sandy beach. Home to gorgeous pine forests and superb golf course, Albufeira is a 30 minute drive from Faro International Airport.

The Algarve is one of the most well-known region to host conferences, meetings and events allying culture to leisure, the Pine Cliffs Resort gathers the ideal conditions to accommodate your company.

Pine Cliffs Resort Resort Map



RESTAURANTES E BARES RESTAURANTS & BARS

- 1 Pin-Pin Healthclub
- 2 Corde Café
- 3 Jazzen Colosseum
- 4 O Pescador
- 5 Golf Clubhouse
- 6 O Quid
- 7 Zest
- 8 Pine Cliffs Beach Club by the Water
- 9 Yachting by the Ocean
- 10 Mirador
- 11 Portafino

OUTRAS FACILIDADES OTHER FACILITIES

- 12 Centro de Conferências / Conference Centre
- 13 Salas Privadas / Private Room
- 14 Real Estate Office
- 15 Receção / Reception
- 16 Elevador para a Praia / Beach Elevator
- 17 Pine Cliffs Club Mini-Market / Mini-Market
- 18 Tênis Garden Lounge
- 19 Loja / Shop
- 20 Sereia The Art of Well Being
- 21 Casa Pine Cliffs
- 22 Distribuição de roupas / Towel Distribution
- 23 Parque Interior / Interior Parking
- 24 Spa / Day Spa
- 25 Farmácia / Pharmacy
- 26 Recepção / Reception
- 27 Passageiros / Shuttle Stop
- 28 Praia / Beach

DESPORTOS E LAZER LEISURE & SPORTS

- 1 Pine Cliffs Golf Active Health Club, 2 piscinas, Piscina Interior Health Club, Gym, Indoor Pool
- 2 Health Club
- 3 Piscina exterior / Outdoor Pool
- 4 Concessionária de Praia / Beach Concession
- 5 Sala de Jogos / Games Room
- 6 Pinho Pinho Akasha do Clássico à Moda dos Clássicos / Vintage and Mini-golf
- 7 Anabela Cliff Academia de Tênis / Tennis Academy
- 8 Padel
- 9 Academia de Golfe - Campo de Tênis Golf Academy - Tennis Range
- 10 Campo de Golf Pine Cliffs / Pine Cliffs Golf Course
- 11 Putting Green
- 12 Futebol / Junior Club Football
- 13 Desporto Aquático / Water Sports
- 14 Circuito de jogging / jogging Track area
- 15 Salto Sports
- 16 Museu de Ciências / Eco Centre

HOTÉIS E PROPRIEDADES HOTELS & PROPERTIES

- 1 PINE CLIFFS HOTEL
- 2 PINE CLIFFS OCEAN SUITES
- 3 PINE CLIFFS BUTTE & SAGAION CLUB
 - O - Figueira
 - C2 - Amendoeira
 - C3 - Limoeiro
 - C4 - Laranjeira
 - C5 - Oliveira
 - C6 - Bananeira
- 4 PINE CLIFFS RESIDENCY
 - S1 - Hamburgo
 - S2 - Casa
 - S3 - Casado
 - S4 - Paredal
 - S5 - Boca
 - S6 - Paço de Sousa
 - S7 - Alentejo
 - S8 - Gavio
 - S9 - Pina
 - S10 - Guarna-Bia
 - S11 - Panoia
 - S12 - Casa
 - S13 - Anápolis
- 5 PINE CLIFFS VILLAGE
 - M0 - M59 - Vila
 - M1 - M8 - Apartamentos / Apartments
 - M2 - M6 - Moradia / Unidades / Townhouses
 - M3 - T20 - Terreno



+351 289 401 0000 (de 09h às 17h30) (de 09h às 17h30)
 +351 289 401 0001 (de 09h às 17h30) (de 09h às 17h30)

[f/PineCliffsAlgarve](#)
[w/PineCliffsAlgarve](#)
[e/pinecliffs@algarve.com](#)
[pnecliffs.com](#)

A State of the Art
Accommodation



Pine Cliffs Hotel, a Luxury Collection Resort

The newly renovated 217 Premium Rooms offer guests a light, airy space, with cooling, terracotta-tiled floors and fresh, white walls opening out onto a private balcony. Each room boasts spectacular views across either the Atlantic Ocean or resort grounds.

The stylishly designed en-suite bathroom provides guests with an invigorating rainfall shower and a generous collection of amenities, from plush bathrobes and slippers, to the custom-blended Luxury Collection toiletries.



Pine Cliffs Ocean Suites, a Luxury Collection Resort

The New Pine Cliffs Ocean Suites, a Luxury Collection Resort, a total of 148 luxury suites will have magnificent views overlooking the sea and the spectacular Algarvian coastline, adjacent to the Pine Cliffs Golf Course.

The interior designer was inspired by the many Portuguese Discoveries and the exquisite hand painted tiles. A perfect combination of a Luxurious & Classic Style of the Portuguese Culture and the Glamour of the Luxury Collection Brand, part of Starwood Hotels & Resorts.



Pine Cliffs Residence Suites, a Luxury Collection Resort

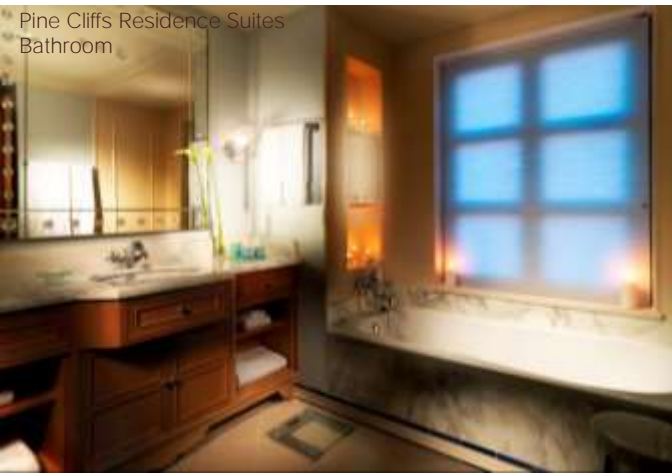
Pine Cliffs Residence, a Luxury Collection Resort are 154 two (101m²) and three (139m²) bedroom fully equipped apartments. These luxury apartments are supported by the Casa Pine Cliffs with a front desk, O Grill restaurant, pool, Health Club and Mini Market. All the apartments are fully air-conditioned individually controlled, have Satellite TV (LCD), in-room safe, high speed internet, fully equipped kitchenette with laundry, 24 hours room service and housekeeping services.



O Grill Restaurant



Pine Cliffs Residence Suites Master Bedroom



Pine Cliffs Residence Suites Bathroom



Pine Cliffs Residence Suites Pool Area



Pine Cliffs Residence Suites Living Room

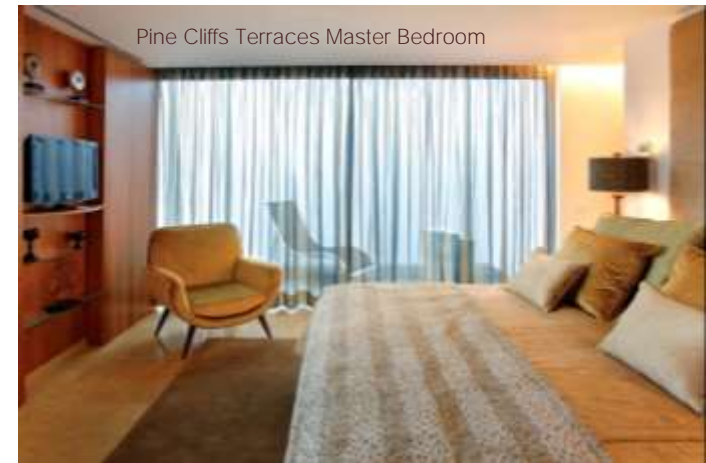
Pine Cliffs Golf Suites

Pine Cliffs Golf Suites offer 78 two (100 m²) and three (115 m²) bedroom luxury apartments, all with individually controlled air-conditioning in each room, living room and large terrace overlooking the 1st tee and 9th hole of the Pine Cliffs Golf Course.

Pine Cliffs Village

Pine Cliffs Village feature 45 townhouses, 4 Villas, 2 Deluxe Villas. The Townhouses, 1 to 4 bedrooms, feature fully equipped kitchen and laundry, living room and terrace with BBQ. The Villas with 4 and 5 bedrooms, in addition to the above, also feature private garden and swimming pool.

Pine Cliffs Terraces are composed of 13 contemporary designed 2, 3 and 4 bedroom townhouses (from 240sqm) located in a secluded area of the resort, 5 minutes from the main hotel building.



Resort Facilities

A secluded Heaven in the Algarve



Leisure Facilities

Pine Cliffs Resort provides an array of activities for all ages, including:



Pine Cliffs 9 Hole Golf Course and Golf Academy



5 Tennis Courts, 2 Padle Courts and Annabel Croft Tennis Academy



Porto Pirata, the Children's Village and Mini Golf



6 Outdoor Pools and 1 Indoor



Health Club, Sauna and Seam Bath



Serenity Spa with 1.000m2

Cuisine Selection (Seasonal)



Jardim Colonial
Exquisite Buffet Selection



O Pescador
Sublime Seafood Sensations



Corda Café
Bistro



Piri Piri Steak House
Chargrilled To Perfection



O Grill
Mediterranean Flavours



Beach Club Pine Cliffs
by Olivier



Club House
Pine Cliffs



Mirador
Champagne Bar

Exclusive Event Venues

Take your Event to the Next Level





Pine Tree Garden

Ideal for: Lunch, Coffee Break, Cocktail or Dinner



Tabu Garden Lounge

Ideal for: Lunch, Cocktail, Concert, Outdoor Meetings or Dinner



Sunset Deck

Ideal for: Evening Cocktail up to 180 guests as from 18:30



Sea Square

Ideal for: Coffee Break, Cocktail or Dinner



Pine Cliffs Residence Terrace

Ideal for: Cocktail and Gala Dinner up to 800 guests



Salão Pinhal

Ideal for: Cocktail and Gala Dinner up to 400 guests



Beach Club and Beach

Ideal for: Dinner and After party

Events on the Beach are subject to an authorization from local maritime authorities and associated legal and catering fees.



Pavillion

Ideal for: Lunch or Dinner up to 120 guests

Aldar Terrace

Ideal for: Cocktail or Dinner up to 70 guests
or standing dinner followed by party inside

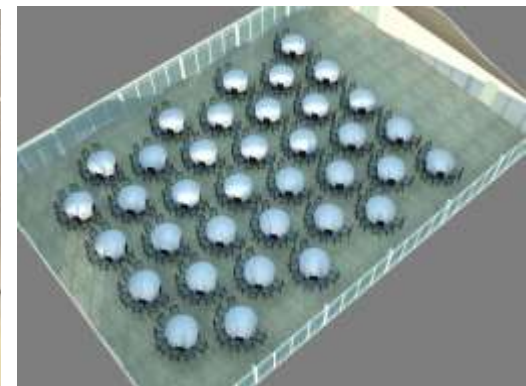
Aldar Moroccan Lounge

Ideal for: After Party

Meetings & Incentives

From intimate business meetings
to large scale presentations





Salão Pinhal Meeting Room

Located near the Golf Suites, the Salão Pinhal is ideal for large conferences up to 500 guests, followed by coffee breaks on the garden.

This meeting space is also suitable for car launches and gala dinners.



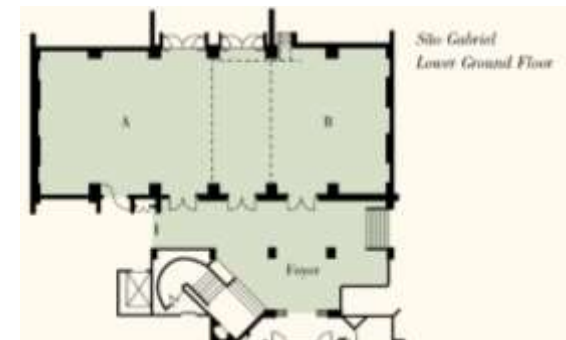
São Rafael Room

Located on the first floor of the Sheraton Algarve Conference Center, São Rafael is ideal for the Plenary meeting.



São Gabriel Room

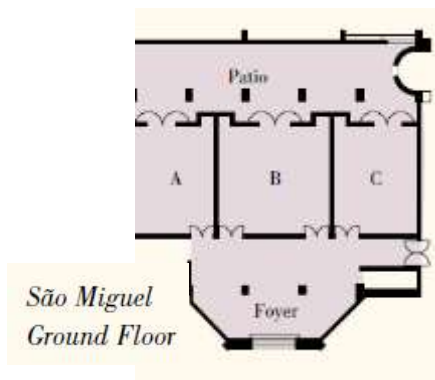
Located on the lower grand floor of the Sheraton Algarve Conference Center, the São Gabriel Room can be divided in 2 breakouts.





São Miguel Room

Located on the ground floor of the Sheraton Algarve Conference Center, São Miguel Room can be divided in 3 breakouts.



Boardroom

Located on the 1st Floor, Boardroom has natural light and capacity for up to 12 guests in Boardroom Shape. Area: 28,63m²

Executive Room

Located on the 1st Floor, Boardroom has natural light and capacity for up to 16 guests in Boardroom Shape. Area: 55,68m²



Outdoor Meetings

Looking for a singular place for your next meeting?

The Tabu Garden is the ideal place. Located on a private area of the resort with natural shades and a stunning view over the ocean, this venue will certainly be unforgettable for all the attendees.



Meeting Rooms Floor Plan

Located in a central area of the lushly landscaped resort grounds, our impressive 2,184 square meters of conference facilities offer 13 elegant rooms with natural light, which depending on arrangement may accommodate up to 550 people.

Cumprimento x Largura x Altura em Metros	Metros Quadrados	Comprimento x Largura x Altura em pés	Pés Quadrados	Disposição em Teatro	Disposição em Escola	Mesas Redondas de Banquetes	Disposição Cabaret	Bloco	Disposição em U	Cocktail
Length x Width x Height in Metres	Square Metres	Length x Width x Height in Feet	Square Feet	Theatre Style	Classrom Style	Round Banquet Tables	Cabaret Style	Block	U Shape	Cocktail

Primeiro Andar / First Floor											
São Rafael A + B	22 x 11 x 4	242	72 x 36 x 13	2605	248	156	180	108	52	58	220
São Rafael A	10 x 11 x 4	110	33 x 36 x 13	1184	84	60	90	54	32	33	100
São Rafael B	12 x 11 x 4	132	39 x 36 x 13	1421	92	84	90	54	36	39	110
São Vicente	18 x 11 x 4	198	59 x 36 x 13	2131	192	108	180	108	50	54	200
São Rafael Foyer	-	54	-	581	-	-	-	-	-	-	60

Boardroom	8 x 3.5 x 2,4	29	26 x 12 x 7	95	-	-	-	-	12	-	-
Executive Room	16 x 3.5 x 2,4	56	53 x 12 x 7	184	-	-	-	-	16	-	-

Réis do chão / Ground Floor											
São Miguel A + B + C	20 x 8 x 3	160	65 x 26 x 10	1722	120	80	100	60	48	48	140
São Miguel A	8 x 6 x 3	48	26 x 20 x 10	517	40	30	30	18	18	21	40
São Miguel B	8 x 8 x 3	64	26 x 26 x 10	689	60	50	40	24	24	24	55
São Miguel C	8 x 6 x 3	48	26 x 20 x 10	517	40	30	30	18	18	21	40
São Miguel Foyer	-	64	-	689	-	-	-	-	-	-	60
São Miguel Terrace	-	102	-	1098	-	-	-	-	-	-	100

Breakout 1	7.5 x 3.5 x 3	27	25 x 12 x 9	89	-	-	-	-	12	-	-
Breakout 2	7.5 x 3.5 x 3	27	25 x 12 x 9	89	-	-	-	-	12	-	-

Piso -1 / Lower Ground Floor											
São Gabriel A + B	24 x 11 x 3,5	264	78 x 36 x 11	2842	224	136	180	108	70	70	220
Alternative I											
São Gabriel A	12 x 11 x 3,5	132	39 x 36 x 11	1421	88	72	90	54	36	42	110
São Gabriel B	12 x 11 x 3,5	132	39 x 36 x 11	1421	88	72	90	54	36	42	110
Alternative II											
São Gabriel A	16 x 11 x 3,5	176	52 x 36 x 11	1895	112	96	120	72	40	48	150
São Gabriel B	8 x 11 x 3,5	88	26 x 36 x 11	947	100	36	60	36	25	30	70
São Gabriel Foyer	-	112	-	1206	-	-	-	-	-	-	110

Resort											
Salão Pinhal	20 x 30 x 2,70 (sides) / 5,30 (center)	600	65 x 97 x 8,9 (sides) / 17,5 (center)	6459	550	480	500	300	-	-	500
Salão Pinhal Garden	-	400	-	4306	-	-	-	-	-	-	-

Pine Cliffs, a Luxury Collection Resort
Praia da Falésia, PO BOX 644, 8200 - 909 Albufeira, Portugal
T: 351.289.500 289 | F: 351.289.500 328

